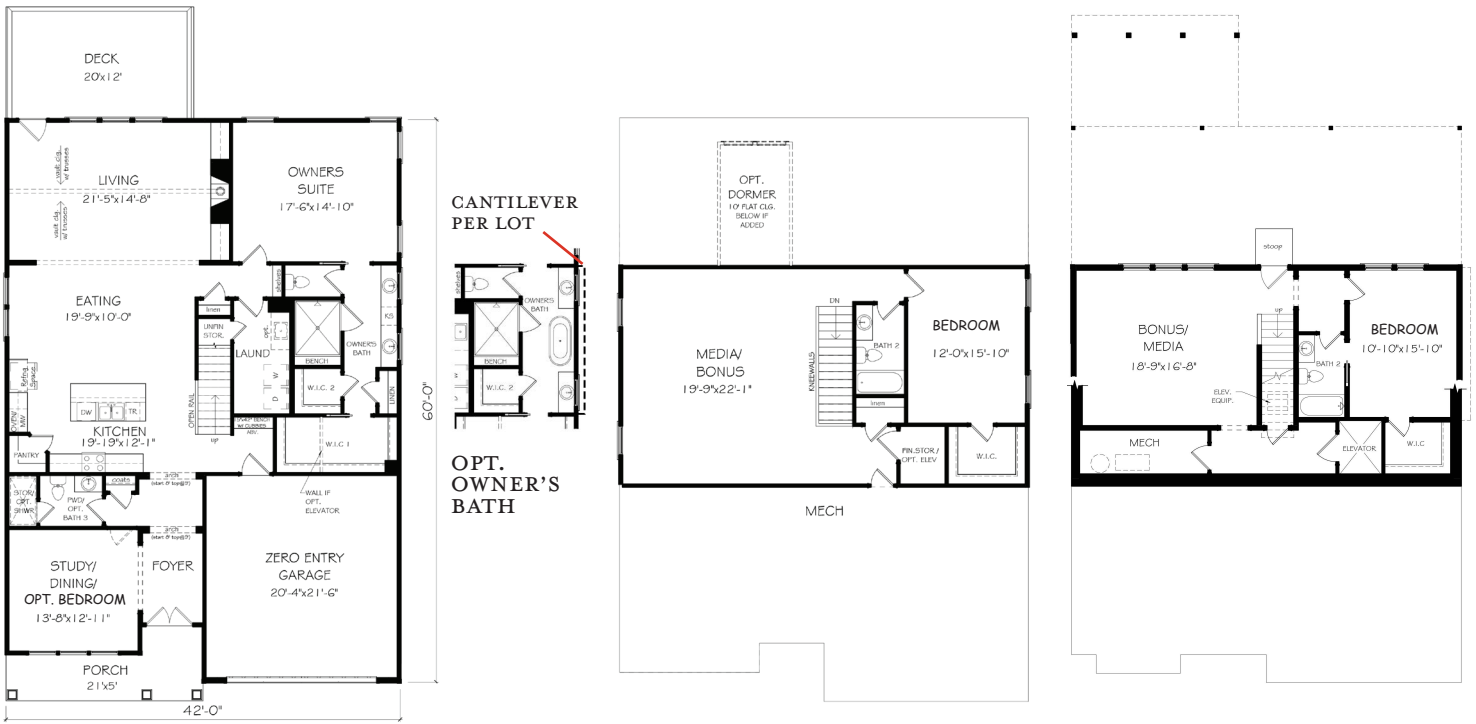


1-STORY + TERRACE (FINISHED) | 2,906 SQ. FT. | 3\* BD, 2.5\* BA

2-STORY | 2,951 SQ. FT. | 3\* BD, 2.5\* BA

2-STORY + TERRACE (FINISHED) | 3,824 SQ. FT. | 4\* BD, 3.5\* BA



FIRST FLOOR

SECOND FLOOR

TERRACE LEVEL