

LAUREL VIEW



15,000 SQ. FT. OF BOUTIQUE RETAIL | OFFICE | MEDICAL
BY JOHN WIELAND, CEO, THE JW COLLECTION

3710 Mathis Airport Pkwy, Suwanee, GA 30024

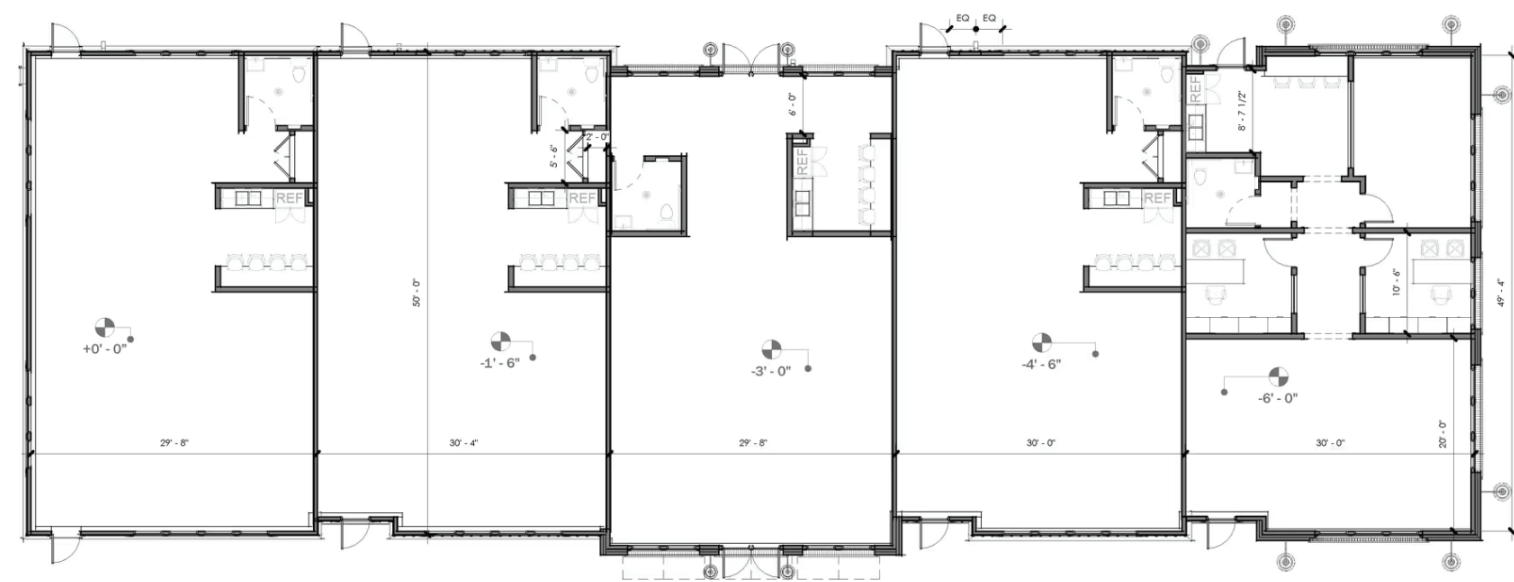
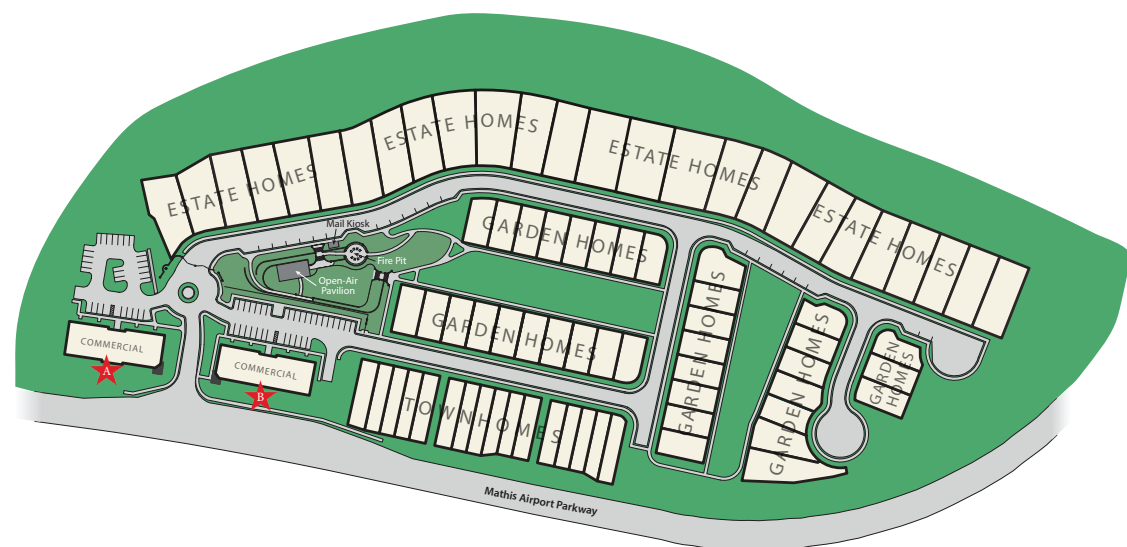
YOUR BUSINESS DESERVES A PLACE TO CALL HOME.



Located in one of South Forsyth's most desirable and rapidly growing corridors, this property offers a rare opportunity for business owners to own commercial space in a thriving, high-income community setting. Totalling 15,000 square feet, the development consists of two 7,500-square-foot buildings, each designed for flexibility and subdivided into ten (10) individual suites of 1,500 square feet.

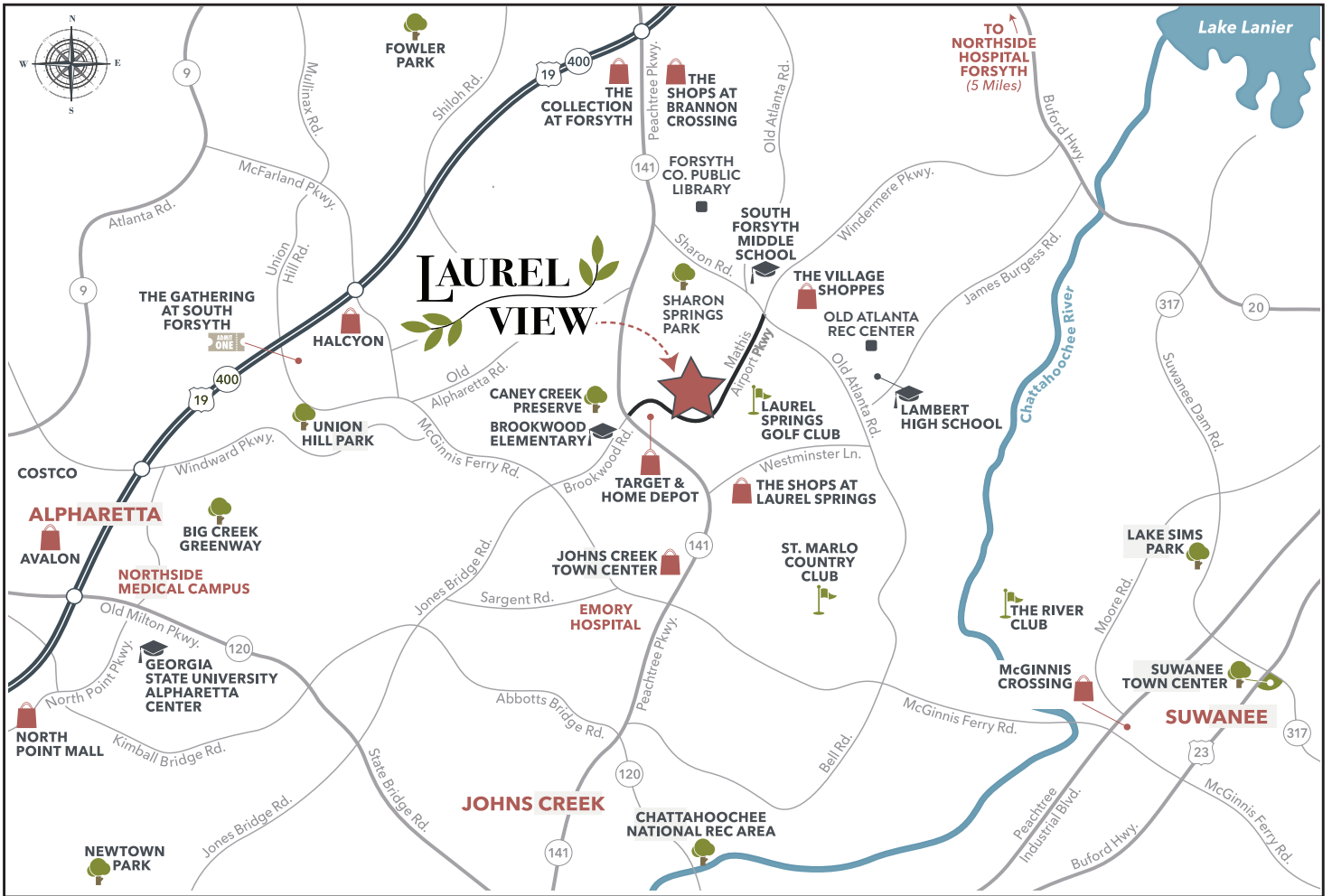
Ten 1,500 Sq. Ft. Office/Retail/Medical Spaces from \$599,900

Each suite features storefront entrances, generous parking, and modern, adaptable layouts, ideal for professional offices, medical or wellness practices, boutique retail, or neighborhood services. With direct frontage and strong visibility along Mathis Airport Parkway, the property enjoys steady daily traffic and convenient access to Suwanee, Alpharetta, and Cumming—three of North Atlanta's most active residential and commercial markets.



Commercial Building Typical Floorplan - Can Be Built to Suit

LAUREL VIEW



For commercial inquiries, please contact Andy Williams at 770-318-8064.



3710 Mathis Airport Pkwy, Suwanee, GA 30024 | jwcl LaurelView.com

SALES BY JW COLLECTION BROKERS, LLC. SUBJECT TO CHANGES, ERRORS & OMISSIONS. 01-2026.